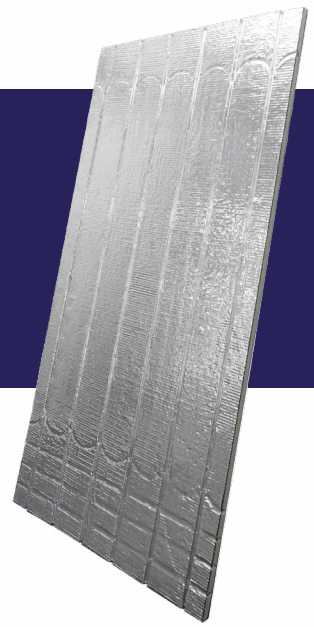


# Uflex Overlay System



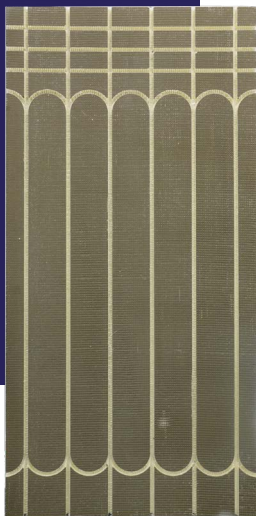
The Grant Uflex and Uflex MINI Overlay systems can be laid on almost any new or existing floor surface making it ideal for retrofit UFH systems or for use as an alternative to screeded systems.

- Lightweight boards
- 16mm or 20mm thick
- Foiled and non-foiled options
- Flame-retardant, high-density polystyrene with a reinforced cementitious layer on top and bottom surfaces
- Excellent impact and compressive strength

## Available in two options:

### Non-Foiled

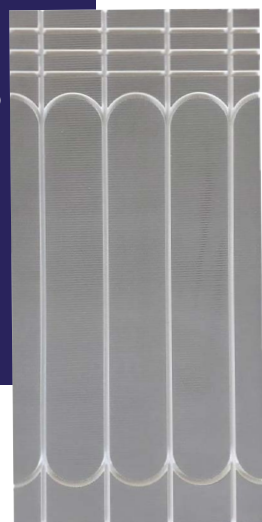
Designed for use with tiles where tile adhesive is used



### Foiled

Designed for use with wood laminate, wood panelling etc. Features a bonded layer of reflective 75micron Aluminium foil on the upper surface to enhance the rapid transmission of heat across the floor.

Note: not for use with ceramic tiles.



## Technical Data

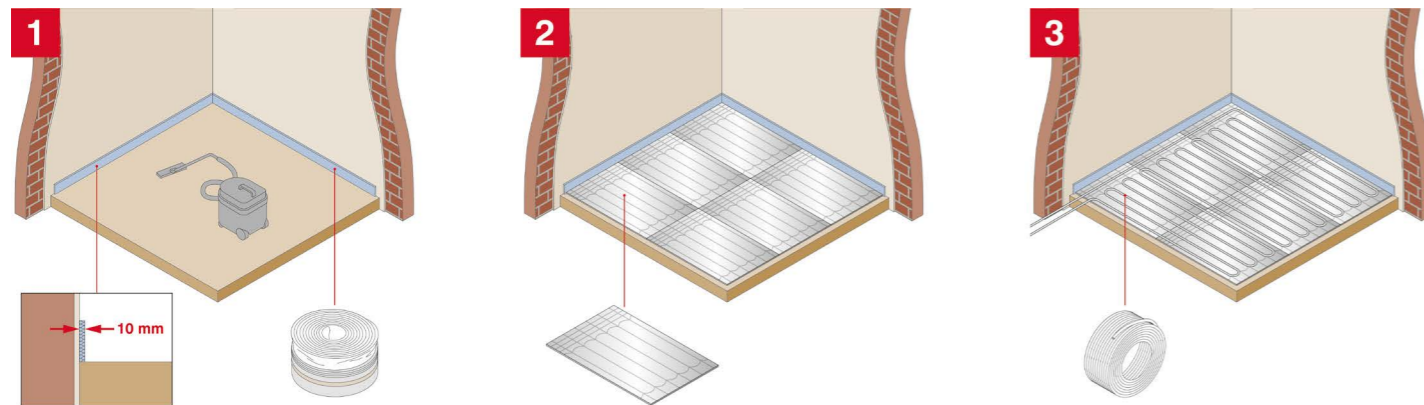
### Uflex MINI Overlay System - 10 mm pipe

Type	Pipe Centres	Board Thickness	Dimensions L x W	Part Code (pack of 10)
Non-foiled	100mm	16mm	1200 x 600mm	UFLEX120
Foiled	100mm	16mm	1200 x 600mm	UFLEX121

### Uflex Overlay System - 16mm pipe

Type	Pipe Centres	Board Thickness	Dimensions L x W	Part Code (pack of 10)
Non-foiled	150mm	20mm	1200 x 600mm	UFLEX122
Foiled	150mm	20mm	1200 x 600mm	UFLEX123
Non-foiled	200mm	20mm	1200 x 600mm	UFLEX124
Foiled	200mm	20mm	1200 x 600mm	UFLEX125

### Installation Sequence



## Technical Data

	Foiled	Non-Foiled
Material	Extruded polystyrene with reinforced cementitious layer	
Foil	0.75micron aluminium foil	n/a
Overall dimensions	1200 x 600mm	
Thickness	16mm - 10mm pipe 20mm - 16mm pipe	
Pipe Centres	100mm - 10mm pipe 150mm - 16mm pipe 200mm - 16mm pipe	
Thermal conductivity	0.022 W/mK	
Water absorption	0.6%	
Compression strength	400kN/m <sup>2</sup>	
Temperature range	-50°C to 75°C	
Weight (per board)	2.48kg (3.44 kg/m <sup>2</sup> )	
Fire performance	BS 476/EN 13501-1 Class 0/Euroclass E	
Sound reduction	BS EN ISO 1014-3 19dB (6mm)	

### IMPORTANT

- Solvent based adhesive products must NOT be used anywhere in conjunction with the Grant ULFEX Overlay system.
- Foiled boards must NOT be used with ceramic tiles.

# Performance Data

## Uflex MINI Overlay System - 10 mm pipe

UFH Pipe Centres		100mm		
Floor Covering Resistance (m <sup>2</sup> K/W)		0.05	0.10	0.15
MWT	Room temp °C	Output W/m <sup>2</sup>		
35 °C	18	87	70	57
	20	76	60	50
	22	65	51	42
40 °C	18	114	90	75
	20	104	82	68
	22	93	73	61

Suitable for perimeter zones only

## Uflex Overlay System - 16mm pipe

UFH Pipe Centres		150mm			200mm		
Floor Covering Resistance (m <sup>2</sup> K/W)		0.05	0.10	0.15	0.05	0.10	0.15
MWT	Room temp °C	Output W/m <sup>2</sup>			Output W/m <sup>2</sup>		
35 °C	18	71	57	48	63	52	45
	20	63	50	42	55	46	39
	22	54	43	36	48	39	34
40 °C	18	92	74	62	81	67	58
	20	84	67	57	74	61	53
	22	75	60	51	66	55	48